



# DALLAS NORTH TOLLWAY IMPROVEMENT PROJECTS

FINAL BEAM PLACEMENT AT TENNYSON PARKWAY  
SCHEDULED FOR AUG. 11

Work continues to rebuild the Tennyson Parkway bridge over the Dallas North Tollway. The new bridge will accommodate the addition of a fourth lane in each direction of the DNT. The last portion of the existing bridge was demolished last spring, and crews are ready to place beams for the new bridge.

## CLOSURE:

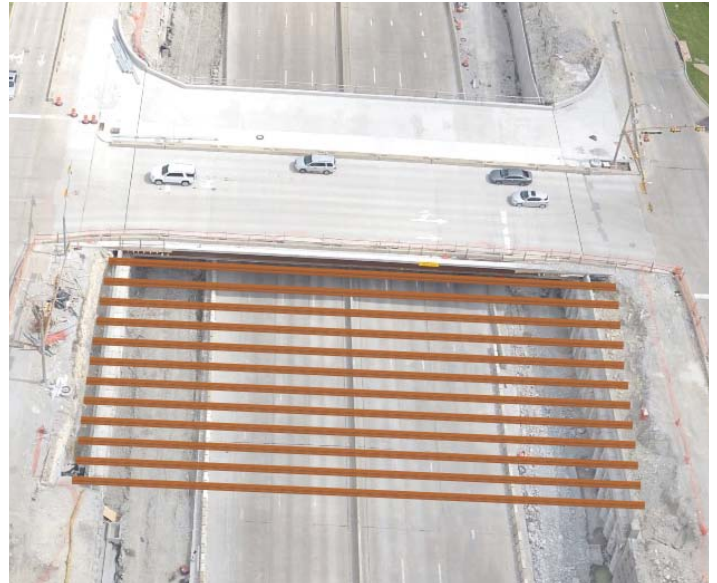
Closures needed to complete this work are to:

### 9-11 p.m. Friday, Aug. 11:

- Two northbound lanes of the DNT from the Spring Creek Parkway exit to the Headquarters Drive entrance ramp
- Two southbound lanes of the DNT from Gaylord Parkway to the Spring Creek Parkway entrance ramp

### 11 p.m. Friday, Aug. 11, through 5 a.m. Monday, Aug. 14 (Continuous closure):

- All northbound lanes of the DNT from the Spring Creek Parkway exit to the Headquarters Drive entrance ramp
- All southbound lanes of the DNT from Gaylord Parkway to the Spring Creek Parkway entrance ramp
- The southwest- and northeast-bound SRT direct-connector ramps to southbound DNT
- The northbound DNT direct-connector ramps to southwest- and northeast-bound SRT
- The northbound entrance ramps from Windhaven Parkway and Spring Creek Parkway
- The northbound exit ramps at Legacy Drive and Headquarters Drive
- The southbound entrance ramps from Gaylord Parkway, State Highway 121 and Legacy Drive



*Rendering of the new beams at Tennyson Parkway.*

- The southbound exit ramps to Legacy Drive and Spring Creek Parkway

## Note: Tennyson Parkway will remain open to traffic.

Changeable message signs will be placed prior to lane closures in the construction area. Law enforcement officers also will be on duty to assist motorists.

All closures are subject to weather conditions and will be postponed, if necessary. NTTA coordinated this closure with the Cities of Plano and Frisco. Delays are expected, and motorists are urged to use caution in the construction area.

**NTTA appreciates the public's patience during the ongoing construction.**

## NEED MORE INFORMATION?

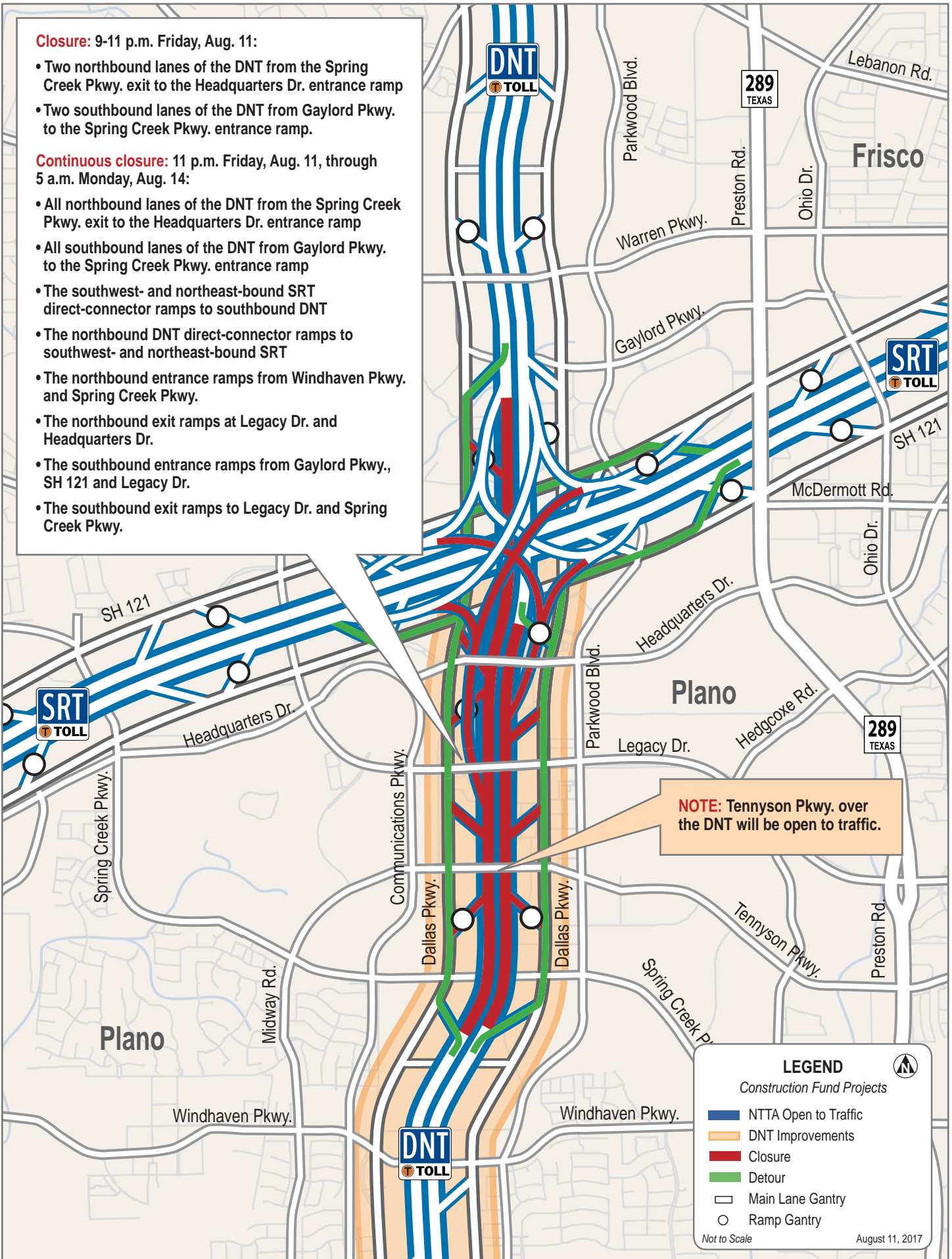
Call: (972) 628-3134 | Email: [ProgressNTTA@NTTA.org](mailto:ProgressNTTA@NTTA.org) | Twitter: @NTTATravelAlert  
Facebook: [NorthTexasTollwayAuthority](https://www.facebook.com/NorthTexasTollwayAuthority)

**Closure:** 9-11 p.m. Friday, Aug. 11:

- Two northbound lanes of the DNT from the Spring Creek Pkwy. exit to the Headquarters Dr. entrance ramp
- Two southbound lanes of the DNT from Gaylord Pkwy. to the Spring Creek Pkwy. entrance ramp.

**Continuous closure:** 11 p.m. Friday, Aug. 11, through 5 a.m. Monday, Aug. 14:

- All northbound lanes of the DNT from the Spring Creek Pkwy. exit to the Headquarters Dr. entrance ramp
- All southbound lanes of the DNT from Gaylord Pkwy. to the Spring Creek Pkwy. entrance ramp
- The southwest- and northeast-bound SRT direct-connector ramps to southbound DNT
- The northbound DNT direct-connector ramps to southwest- and northeast-bound SRT
- The northbound entrance ramps from Windhaven Pkwy. and Spring Creek Pkwy.
- The northbound exit ramps at Legacy Dr. and Headquarters Dr.
- The southbound entrance ramps from Gaylord Pkwy., SH 121 and Legacy Dr.
- The southbound exit ramps to Legacy Dr. and Spring Creek Pkwy.



**NOTE:** Tennyson Pkwy. over the DNT will be open to traffic.

**LEGEND**

Construction Fund Projects

- NTTA Open to Traffic
- DNT Improvements
- Closure
- Detour
- Main Lane Gantry
- Ramp Gantry

Not to Scale August 11, 2017