



# CITY OF THE COLONY GPS CONTROL SHEET

ESTABLISHED BY: BRITTAIN & CRAWFORD, LLC.  
LAND SURVEYING & TOPOGRAPHIC MAPPING PH. 817-926-0211

MONUMENT NAME: MONUMENT No. 7	DATE ESTABLISHED: FEBRUARY, 2009	COUNTY: DENTON	STATE: TEXAS	MAPSCO PAGE NO. 554-F
NAD-83 (CORS 96) GEODETIC POSITION  LATITUDE N 033° 05' 58.08288" LONGITUDE W 096° 52' 36.09634"		NAD-83 (CORS 96) STATE PLANE COORDINATES NORTH CENTRAL ZONE (METERS)  NORTHING (Y) 2160053.550 EASTING (X) 751507.488		
ELLIPSOIDAL ELEVATION (METERS) 153.407  ELLIPSOIDAL HEIGHT (METERS) -26.419		NAD-83 (CORS 96) STATE PLANE COORDINATES NORTH CENTRAL ZONE (U.S. SURVEY FEET)  NORTHING (Y) 7086775.68862 EASTING (X) 2465570.81688		
AZIMUTH MARK: CHISELED "X" IN BOX AT THE CENTER END OF SIDEWALK AT EDGE OF DRIVE EXIT OF THE POLICE COURTS BUILDING LYING S87°27'22"W 610.85' FROM MONUMENT #7		NAVD-88 ELEV: 589.979' (U.S. SURVEY FEET)		

DESCRIPTION: 3 1/4" ALUMINUM DISK SET IN CONCRETE APPROXIMATELY 150' SW OF A WATER TOWER ON NORTH COLONY BOULEVARD, 27.1' NORTH OF NORTH CURB, 19.7' EAST OF EAST CURB OF A RESIDENTIAL SERVICE ROAD AT THE SOUTHWEST CORNER OF THE WATER TOWER SITE FENCE.

**LEGEND:**  
⊙ = MONUMENT

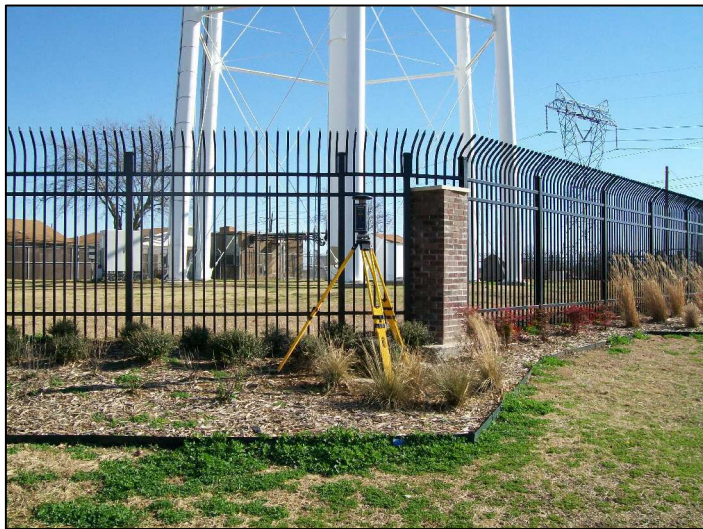
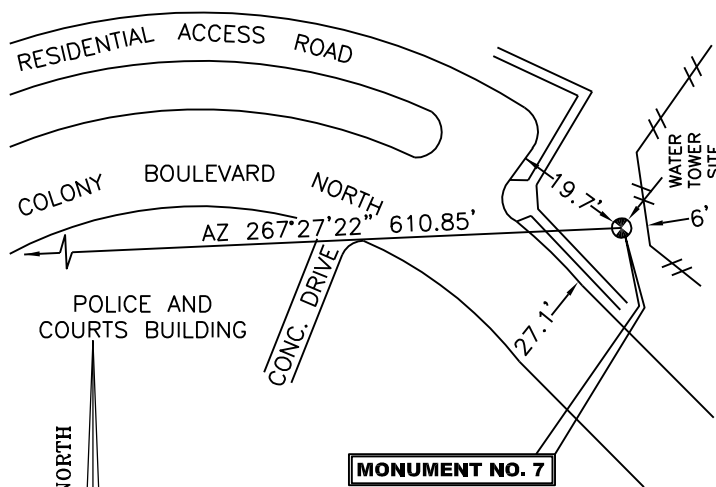


PHOTO TAKEN FROM WEST LOOKING EAST  
TOWARDS WATER TOWER



Monument 7.txt

FILE: COL70362.090 000513742

2005 NOTE: The IGS precise and IGS rapid orbits were not available
2005 at processing time. The IGS ultra-rapid orbit was/will be used to
2005 process the data.
2005

NGS OPUS SOLUTION REPORT

All computed coordinate accuracies are listed as peak-to-peak values.
For additional information: www.ngs.noaa.gov/OPUS/Using\_OPUS.html#accuracy

RINEX FILE: col7036n.09o DATE: February 06, 2009
TIME: 15:01:32 UTC

SOFTWARE: page5 0810.20 master24.p] 081023 START: 2009/02/05 13:37:00
EPHEMERIS: igu15174.eph [ultra-rapid] STOP: 2009/02/05 17:37:00
NAV FILE: brdc0360.09n OBS USED: 7980 / 9171 :87%
ANT NAME: THA800961+REC NONE # FIXED AMB: 49 / 50 :98%
ARP HEIGHT: 1.41732 OVERALL RMS: 0.016(m)

REF FRAME: NAD\_83(CORS96)(EPOCH:2002.0000) ITRF00 (EPOCH:2009.0977)

X: -640402.372(m) 0.024(m) -640403.078(m) 0.024(m)
Y: -5310110.053(m) 0.022(m) -5310108.631(m) 0.022(m)
Z: 3463288.968(m) 0.045(m) 3463288.798(m) 0.045(m)

LAT: 33 5 58.08288 0.033(m) 33 5 58.10179 0.033(m)
E LON: 263 7 23.90366 0.025(m) 263 7 23.87006 0.025(m)
W LON: 96 52 36.09634 0.025(m) 96 52 36.12994 0.025(m)
EL HGT: 153.407(m) 0.042(m) 152.202(m) 0.042(m)
ORTHO HGT: 179.826(m) 0.077(m) [NAVD88 (Computed using GEOID03)]

UTM COORDINATES STATE PLANE COORDINATES
UTM (Zone 14) SPC (4202 TXNC)
Northing (Y) [meters] 3664319.556 2160053.550
Easting (X) [meters] 698146.038 751507.488
Convergence [degrees] 1.15990328 0.88534233
Point Scale 1.00008411 0.99987297
Combined Factor 1.00006002 0.99984889

US NATIONAL GRID DESIGNATOR: 14SPB9814664320(NAD 83)

BASE STATIONS USED
PID DESIGNATION LATITUDE LONGITUDE DISTANCE(m)
DF8986 TXDE DENTON CORS ARP N331237.612 W0970945.970 29390.3
DF4385 ZFW1 FORT WORTH WAAS 1 CORS ARP N324950.320 W0970359.262 34693.8
DF8982 TXCO COLLIN CORS ARP N330954.927 W0963740.571 24332.7

NEAREST NGS PUBLISHED CONTROL POINT
DN0272 Y 930 N330605. W0965117. 2060.0

This position and the above vector components were computed without any knowledge by the
National Geodetic Survey regarding the equipment or field operating procedures used.