



CITY OF THE COLONY GPS CONTROL SHEET

ESTABLISHED BY: BRITTAIN & CRAWFORD, LLC.
LAND SURVEYING & TOPOGRAPHIC MAPPING PH. 817-926-0211

MONUMENT NAME: MONUMENT No. 8	DATE ESTABLISHED: FEBRUARY, 2009	COUNTY: DENTON	STATE: TEXAS	MAPSCO PAGE NO. 553-Z
----------------------------------	-------------------------------------	-------------------	-----------------	--------------------------

NAD-83 (CORS 96) GEODETIC POSITION LATITUDE N 033° 03' 50.74939" LONGITUDE W 096° 53' 58.21910"	NAD-83 (CORS 96) STATE PLANE COORDINATES NORTH CENTRAL ZONE (METERS) NORTHING (Y) 2156099.048 EASTING (X) 749438.315
---	---

ELLIPSOIDAL ELEVATION (METERS) 147.034 ELLIPSOIDAL HEIGHT (METERS) -26.577	NAD-83 (CORS 96) STATE PLANE COORDINATES NORTH CENTRAL ZONE (U.S. SURVEY FEET) NORTHING (Y) 7073801.62664 EASTING (X) 2458782.20513
---	--

AZIMUTH MARK: CHISELED "X" IN BOX AT THE SOUTHEAST CORNER OF A CURB INLET ON THE NORTH SIDE OF MEMORIAL DRIVE 498' WEST OF THE CENTERLINE STANDRIDGE DRIVE LYING S88°11'31"W 1137.60' FROM MONUMENT #8	NAVD-88 ELEV: 569.589' (U.S. SURVEY FEET)
--	--

DESCRIPTION: 3 1/4" ALUMINUM DISK SET IN CONCRETE 3.6' NORTH OF THE NORTH CURB OF MEMORIAL DRIVE AND 693' EAST OF THE CENTERLINE INTERSECTION OF STANDRIDGE DRIVE.

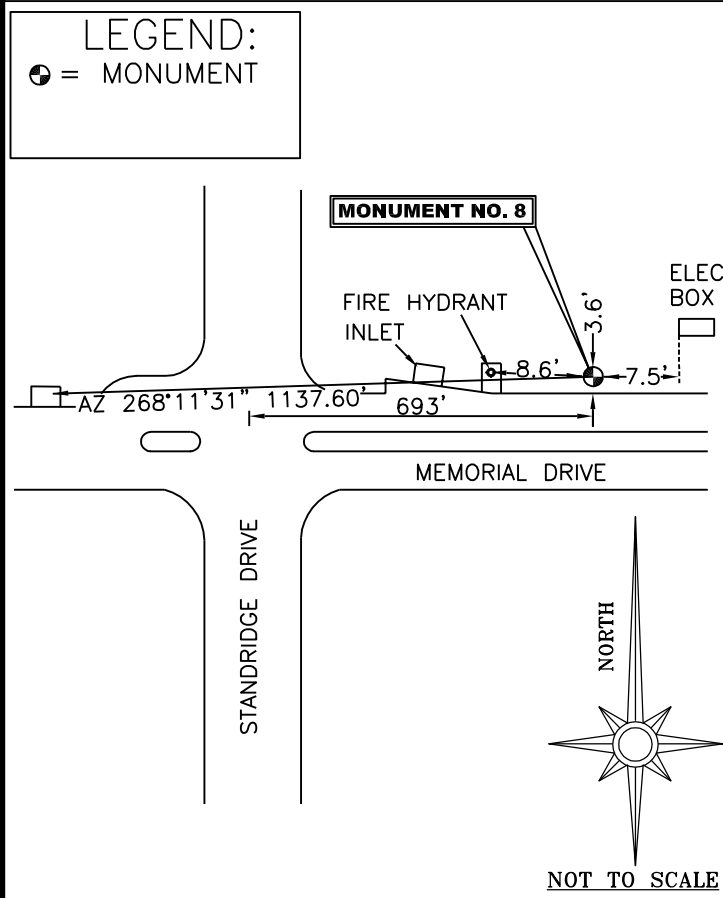


PHOTO TAKEN FROM EAST OF THE MONUMENT LOOKING WEST TOWARDS STANDRIDGE DRIVE.



Monument 8.txt

FILE: CO160352.090 000513753

NGS OPUS SOLUTION REPORT

All computed coordinate accuracies are listed as peak-to-peak values. For additional information: www.ngs.noaa.gov/OPUS/Using_OPUS.html#accuracy

RINEX FILE: co16035n.09o

DATE: February 06, 2009
TIME: 15:12:41 UTC

SOFTWARE: page5 0810.20 master24.pl 081023 START: 2009/02/04 13:52:00
EPHEMERIS: igr15173.eph [rapid] STOP: 2009/02/04 17:51:30
NAV FILE: brdc0350.09n OBS USED: 9218 / 9810 :94%
ANT NAME: THA800961+REC NONE # FIXED AMB: 57 / 57 :100%
ARP HEIGHT: 1.44475 OVERALL RMS: 0.012(m)

REF FRAME: NAD_83(CORS96)(EPOCH:2002.0000) ITRF00 (EPOCH:2009.0950)

X: -642773.084(m) 0.012(m) -642773.790(m) 0.012(m)
Y: -5311975.102(m) 0.008(m) -5311973.679(m) 0.008(m)
Z: 3459998.538(m) 0.005(m) 3459998.368(m) 0.005(m)

LAT: 33 3 50.74939 0.007(m) 33 3 50.76828 0.007(m)
E LON: 263 6 1.78090 0.012(m) 263 6 1.74729 0.012(m)
W LON: 96 53 58.21910 0.012(m) 96 53 58.25271 0.012(m)
EL HGT: 147.034(m) 0.004(m) 145.829(m) 0.004(m)
ORTHO HGT: 173.611(m) 0.064(m) [NAVD88 (Computed using GEOID03)]

	UTM COORDINATES	STATE PLANE COORDINATES
	UTM (Zone 14)	SPC (4202 TXNC)
Northing (Y) [meters]	3660354.386	2156099.048
Easting (X) [meters]	696095.377	749438.315
Convergence [degrees]	1.14634725	0.87290086
Point Scale	1.00007414	0.99987265
Combined Factor	1.00005106	0.99984957

US NATIONAL GRID DESIGNATOR: 14SPB9609560354(NAD 83)

BASE STATIONS USED

PID	DESIGNATION	LATITUDE	LONGITUDE	DISTANCE(m)
DF8986	TXDE DENTON CORS ARP	N331237.612	W0970945.970	29443.6
DF4385	ZFW1 FORT WORTH WAAS 1 CORS ARP	N324950.320	W0970359.262	30234.1
DF8982	TXCO COLLIN CORS ARP	N330954.927	W0963740.571	27718.8

DN0269 Y 262 NEAREST NGS PUBLISHED CONTROL POINT N330339. W0965126. 3961.5

This position and the above vector components were computed without any knowledge by the National Geodetic Survey regarding the equipment or field operating procedures used.