



CITY OF THE COLONY GPS CONTROL SHEET

ESTABLISHED BY: BRITAIN & CRAWFORD, LLC.
LAND SURVEYING & TOPOGRAPHIC MAPPING PH. 817-926-0211

MONUMENT NAME: MONUMENT No. 13	DATE ESTABLISHED: FEBRUARY, 2009	COUNTY: DENTON	STATE: TEXAS	MAPSCO PAGE NO. 655-A
NAD-83 (CORS 96) GEODETIC POSITION LATITUDE N 033° 03' 20.18545" LONGITUDE W 096° 51' 09.57284"		NAD-83 (CORS 96) STATE PLANE COORDINATES NORTH CENTRAL ZONE (METERS) NORTHING (Y) 2155225.311 EASTING (X) 753826.756		
ELLIPSOIDAL ELEVATION (METERS) 172.173 ELLIPSOIDAL HEIGHT (METERS) -26.442		NAD-83 (CORS 96) STATE PLANE COORDINATES NORTH CENTRAL ZONE (U.S. SURVEY FEET) NORTHING (Y) 7070935.04117 EASTING (X) 2473179.94864		
AZIMUTH MARK: MONUMENT #12 AT INTERSECTION OF PLANO PARKWAY AND WINDHAVEN PARKWAY, LYING N72°20'01"W FROM MONUMENT #13		NAVD-88 ELEV: 651.623' (U.S. SURVEY FEET)		

DESCRIPTION: 3 1/4" ALUMINUM DISK SET IN CONCRETE IN MEDIAN OF WINDHAVEN PARKWAY 17.6' SOUTH OF NORTH MEDIAN CURB AND 53.6' WEST OF WEST MEDIAN NOSE AT THE INTERSECTION OF WEST ARBOR HILLS AND WINDHAVEN PARKWAY.

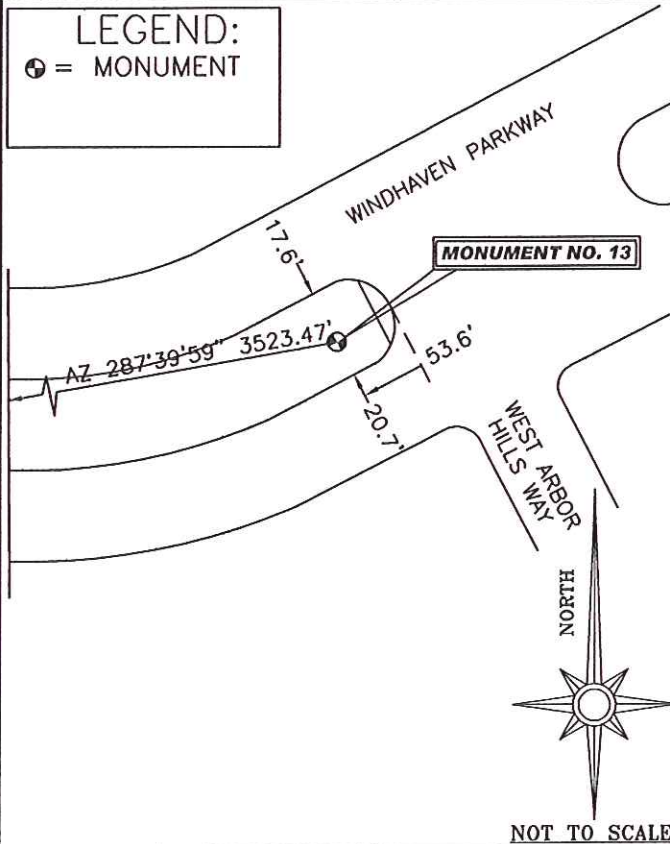


PHOTO TAKEN FROM THE SOUTHWEST
LOOKING NORTHEAST TOWARDS ARBOR HILLS



Monument 13.txt

FILE: co130342.090 000513746

NGS OPUS SOLUTION REPORT

All computed coordinate accuracies are listed as peak-to-peak values.
 For additional information: www.ngs.noaa.gov/OPUS/Using_OPUS.html#accuracy

RINEX FILE: co130340.09o DATE: February 06, 2009
 TIME: 15:06:28 UTC

SOFTWARE: page5 0810.20 master23.pl 081023 START: 2009/02/03 14:25:00
 EPHEMERIS: igr15172.eph [rapid] STOP: 2009/02/03 18:26:00
 NAV FILE: brdc0340.09n OBS USED: 9457 / 10066 :94%
 ANT NAME: THA800961+REC NONE # FIXED AMB: 55 / 56 :98%
 ARP HEIGHT: 1.46304 OVERALL RMS: 0.016(m)

REF FRAME: NAD_83(CORS96) (EPOCH:2002.0000) ITRF00 (EPOCH:2009.0923)

X:	-638493.494(m)	0.022(m)	-638494.200(m)	0.022(m)
Y:	-5313029.781(m)	0.025(m)	-5313028.358(m)	0.025(m)
Z:	3459223.087(m)	0.027(m)	3459222.917(m)	0.027(m)

LAT:	33 3 20.18545	0.035(m)	33 3 20.20434	0.035(m)
E LON:	263 8 50.42716	0.025(m)	263 8 50.39360	0.025(m)
W LON:	96 51 9.57284	0.025(m)	96 51 9.60640	0.025(m)
EL HGT:	172.173(m)	0.004(m)	170.966(m)	0.004(m)
ORTHO HGT:	198.615(m)	0.064(m)	[NAVD88 (Computed using GEOID03)]	

	UTM COORDINATES	STATE PLANE COORDINATES
	UTM (Zone 14)	SPC (4202 TXNC)
Northing (Y) [meters]	3659501.413	2155225.311
Easting (X) [meters]	700488.868	753826.756
Convergence [degrees]	1.17166379	0.89845051
Point Scale	1.00009563	0.99987263
Combined Factor	1.00006860	0.99984560

US NATIONAL GRID DESIGNATOR: 14SQB0048959501(NAD 83)

BASE STATIONS USED

PID	DESIGNATION	LATITUDE	LONGITUDE	DISTANCE(m)
DF4385	ZFW1 FORT WORTH WAAS 1 CORS ARP	N324950.320	W0970359.262	31972.5
DF8984	TXDA DALLAS CORS ARP	N324759.927	W0964022.453	32961.0
DF8982	TXCO COLLIN CORS ARP	N330954.927	W0963740.571	24245.9

NEAREST NGS PUBLISHED CONTROL POINT

DN0269	Y 262	N330339.	W0965126.	720.9
--------	-------	----------	-----------	-------

This position and the above vector components were computed without any knowledge by the National Geodetic Survey regarding the equipment or field operating procedures used.