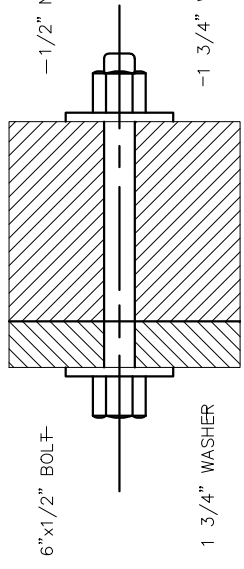
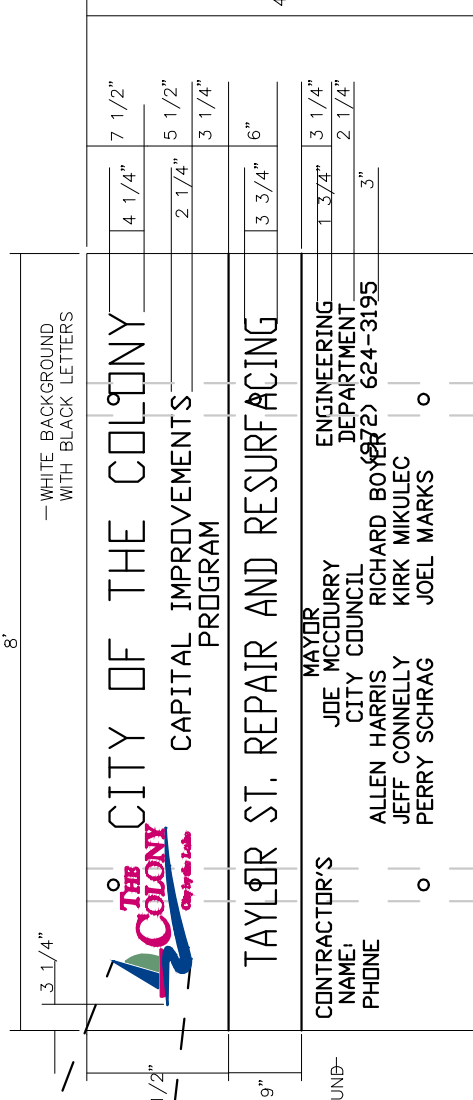




LOGO ENLARGEMENT

COLORS ARE STANDARD PMS SHADES AS NOTED BELOW:
 RED # 1955
 BLUE # 541
 GREEN # 576



GENERAL NOTES:

1. SIGN BOARD SHALL BE 3/4" EXTERIOR RATED PLYWOOD SANDED ON FACE SIDE.
2. POST SHALL BE 4"x4"x10' PRESSURE TREATED MOUNTED 30" MIN. IN GROUND.
3. 6 EA. BOLTS SHALL BE 6"x1/2" GALV. BOLTS.

—USE A 1 3/4" LETTER HEIGHT AND 1 1/4" SPACING BETWEEN LINES. CENTER ON LOWER HALF OF SIGN AS SHOWN.

—WHITE BACKGROUND WITH BLACK LETTERS

—4"x4"x10' POST

POST X-SECTION

STANDARD CAPITAL IMPROVEMENT PROJECT SIGN DETAIL

NOT TO SCALE

CERTIFICATION:
 THIS CITY OF THE COLONY STANDARD DETAIL SHEET IS AUTHORIZED FOR USE IN THIS PROJECT BY THE ENGINEER WHOSE SEAL APPEARS ON THIS SHEET. THIS ENGINEER IS ALSO CERTIFYING THAT THE CONTENT OF THE DETAILS AND NOTES ON THIS SHEET HAVE NOT BEEN ALTERED FROM THAT RECEIVED FROM THE CITY OF THE COLONY.

PAVEMENT STANDARD DETAILS

MISCELLANEOUS



THE CITY OF THE COLONY TEXAS

ENGINEERING DEPARTMENT

DESIGN	DRAWN	CHECK	DATE	SCALE	FILE	NO.
			MARCH 21 2007	N.T.S.		