



CITY OF THE COLONY GPS CONTROL SHEET

ESTABLISHED BY: BRITTAIN & CRAWFORD, LLC.
LAND SURVEYING & TOPOGRAPHIC MAPPING PH. 817-926-0211

MONUMENT NAME: MONUMENT No. 6	DATE ESTABLISHED: FEBRUARY, 2009	COUNTY: DENTON	STATE: TEXAS	MAPSCO PAGE NO. 553-A
----------------------------------	-------------------------------------	-------------------	-----------------	--------------------------

NAD-83 (CORS 96) GEODETIC POSITION LATITUDE N 033° 06' 11.72699" LONGITUDE W 096° 55' 35.53451"	NAD-83 (CORS 96) STATE PLANE COORDINATES NORTH CENTRAL ZONE (METERS) NORTHING (Y) 2160403.007 EASTING (X) 746849.480
---	---

ELLIPSOIDAL ELEVATION (METERS) 137.982 ELLIPSOIDAL HEIGHT (METERS) -26.558	NAD-83 (CORS 96) STATE PLANE COORDINATES NORTH CENTRAL ZONE (U.S. SURVEY FEET) NORTHING (Y) 7087922.19879 EASTING (X) 2450288.66896
---	--

AZIMUTH MARK: CHISELED "X" IN BOX ON TOP OF WEST CURB OF LEBANON ROAD OPPOSITE A WATER MANHOLE, LYING N18°39'16"E 638.05' FROM MONUMENT #6	NAVD-88 ELEV: 539.828' (U.S. SURVEY FEET)
--	--

DESCRIPTION: 3 1/4" ALUMINUM DISK SET IN CONCRETE APPROXIMATELY 230' NORTHWEST OF THE INTERSECTION OF OLD BOYD ROAD IN THE MEDIAN OF LEBANON ROAD AND 5' EAST OF THE WEST MEDIAN CURB, 180' NORTHWEST OF THE SOUTH NOSE OF MEDIAN AND 190' SOUTHEAST OF THE NORTHEAST NOSE OF MEDIAN.

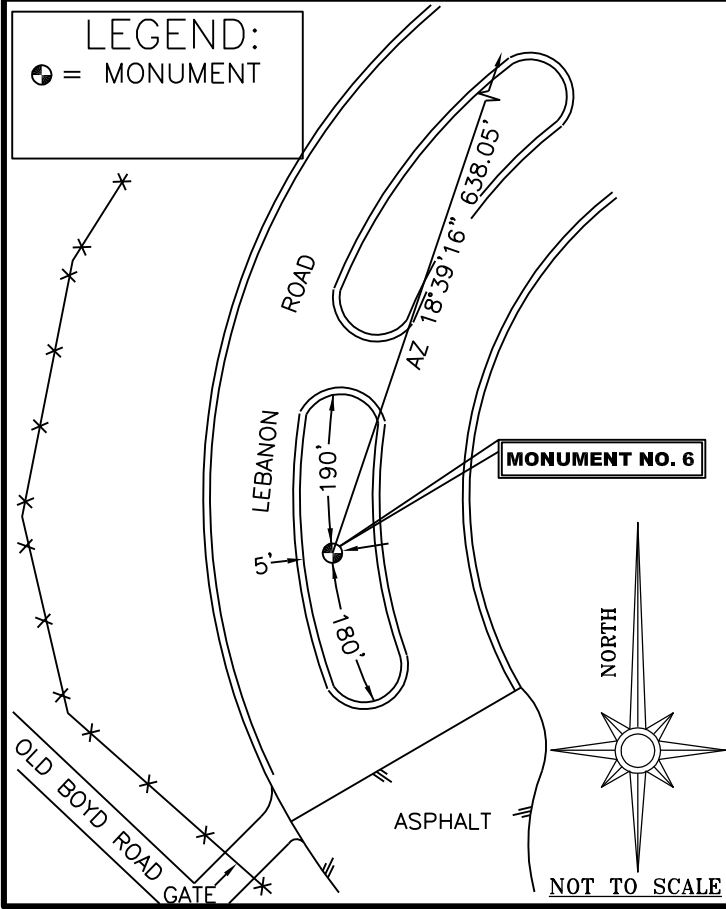


PHOTO TAKEN FROM SOUTH OF MONUMENT LOOKING NORTH ALONG LEBANON ROAD TOWARDS AZIMUTH MARK AND MAIN STREET.



Monument 6.txt

FILE: COL60362.090 000513738

2005 NOTE: The IGS precise and IGS rapid orbits were not available
 2005 at processing time. The IGS ultra-rapid orbit was/will be used to
 2005 process the data.
 2005

NGS OPUS SOLUTION REPORT

All computed coordinate accuracies are listed as peak-to-peak values.
 For additional information: www.ngs.noaa.gov/OPUS/Using_OPUS.html#accuracy

RINEX FILE: col6036n.09o DATE: February 06, 2009
 TIME: 15:01:54 UTC

SOFTWARE: page5 0810.20 master11.p] 081023 START: 2009/02/05 13:50:00
 EPHEMERIS: igu15174.eph [ultra-rapid] STOP: 2009/02/05 17:50:00
 NAV FILE: brdc0360.09n OBS USED: 9173 / 9832 :93%
 ANT NAME: THA800961+REC NONE # FIXED AMB: 53 / 53 :100%
 ARP HEIGHT: 1.197866 OVERALL RMS: 0.013(m)

REF FRAME: NAD_83(CORS96)(EPOCH:2002.0000) ITRF00 (EPOCH:2009.0977)

X:	-644992.368(m)	0.010(m)	-644993.074(m)	0.010(m)
Y:	-5309310.219(m)	0.013(m)	-5309308.797(m)	0.013(m)
Z:	3463632.672(m)	0.016(m)	3463632.502(m)	0.016(m)

LAT:	33 6 11.72699	0.010(m)	33 6 11.74589	0.010(m)
E LON:	263 4 24.46549	0.010(m)	263 4 24.43184	0.010(m)
W LON:	96 55 35.53451	0.010(m)	96 55 35.56816	0.010(m)
EL HGT:	137.982(m)	0.019(m)	136.778(m)	0.019(m)
ORTHO HGT:	164.540(m)	0.067(m)	[NAVD88 (Computed using GEOID03)]	

	UTM COORDINATES	STATE PLANE COORDINATES
	UTM (Zone 14)	SPC (4202 TXNC)
Northing (Y) [meters]	3664646.750	2160403.007
Easting (X) [meters]	693485.478	746849.480
Convergence [degrees]	1.13277270	0.85815773
Point Scale	1.00006160	0.99987303
Combined Factor	1.00003994	0.99985137

US NATIONAL GRID DESIGNATOR: 14SPB9348564647(NAD 83)

		BASE STATIONS USED		
PID	DESIGNATION	LATITUDE	LONGITUDE	DISTANCE(m)
DF8986	TXDE DENTON CORS ARP	N331237.612	W0970945.970	25040.2
DF4385	ZFW1 FORT WORTH WAAS 1 CORS ARP	N324950.320	W0970359.262	32943.2
DF8982	TXCO COLLIN CORS ARP	N330954.927	W0963740.571	28699.4

NEAREST NGS PUBLISHED CONTROL POINT			
ID	DESIGNATION	LATITUDE	DISTANCE(m)
DN0330	C 947	N330653.	W0965902. 5497.9

This position and the above vector components were computed without any knowledge by the National Geodetic Survey regarding the equipment or field operating procedures used.